

Mini D Stereo Amplifiers

INSTALLATION MANUAL

mini D1000.4



mini D1500.2



mini D3000.4



**EARTHQUAKE
EARTHQUAKE®
SOUND**

The Sound That Will Move You

Earthquake Sound reserves the right to amend the details of the specifications without notice.

© Copyright Earthquake Sound Corporation

Earthquake Sound Corporation • 2727 McCone Avenue, Hayward, CA 94545, USA

www.earthquakesound.com

**EARTHQUAKE
EARTHQUAKE®
SOUND**

The Sound That Will Move You

TABLE OF CONTENTS

Cautions and Advisories	2
Our Thank You.....	3
Features and Functions.....	4-5
Signal Sensing - Auto On/Remote On.....	6-7
Wiring Preparation.....	8
Wiring Configurations.....	9-11
Specifications.....	12-13
One (1) Year Warranty Guidelines.....	14-15

CAUTION: Earthquake amplifiers are capable of generating high sound pressure levels. You should exercise caution when operating these amplifier systems. Long term exposures to high levels of sound pressure will cause permanent damage to your hearing. Sound pressure levels exceeding 85dB can be dangerous with constant exposure. Set your audio system to a comfortable loudness level. Earthquake Sound Corporation does not assume liability for damages resulting from the direct use of Earthquake amplifiers or other Earthquake products and urges users to play their music at moderate listening levels.

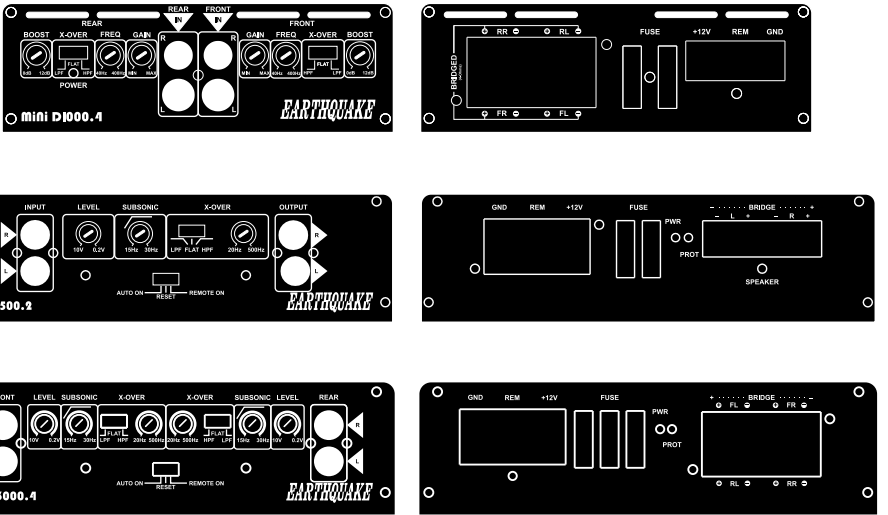
SOUND LEVEL dBA	DURATION PER DAY (HOURS)	THIS CHART SHOWS THE U.S. GOVERNMENT'S OCCUPATIONAL SAFETY AND HEALTH ADMINISTRATION (OSHA) REGULATIONS WHICH WERE IN EFFECT AT THE TIME OF THIS PUBLICATION FOR PERMISSIBLE NOISE EXPOSURE, PER 29CFR1910.95, TABLE G-16
90	8	
92	6	
95	4	
97	3	
100	2	
102	1 - 1 1/2	
105	1	
110	1/2	
115	1/4 OR LESS	

THANK YOU

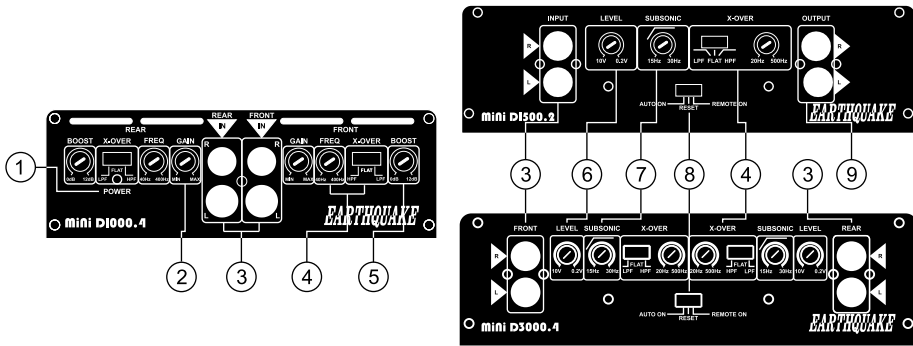
Thank you for choosing Earthquake Sound's line of **mini D** amplifiers, the best way to enhance your factory mobile audio system. With proper installation and responsible listening, your amplifier(s) will give you years of near perfect sound reproduction.

We strongly recommend you to have your new amplifier(s) installed by an authorized Earthquake Sound dealer. Installation professionals employed by your dealer have the correct tools and knowledge to install your amplifier(s) neatly and successfully. Also, when your new products are installed by an authorized dealer, your products will include a **ONE (1) YEAR LIMITED WARRANTY**. If you choose to perform your own installation, your warranty will be subject to further limitations. Dealer policies on handling warranty requests may vary from one dealer to the next.

Please read the warranty information (located at the end of this booklet) in its entirety and use good judgement when making these vital decisions.

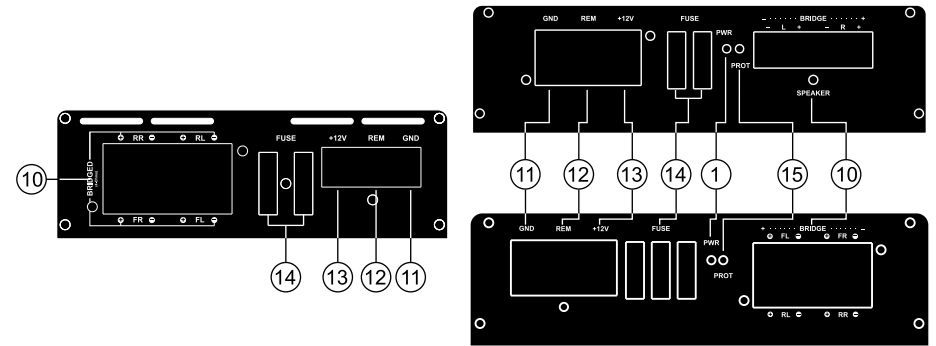


Mini D Stereo Amps FUNCTIONS AND FEATURES



- ① **POWER LED:** When lit up, the amplifier is functioning properly.
- ② **GAIN CONTROL:** Available only on the **D1000.4**, set based on the head unit's output voltage. Note, this is **not a volume control**. Always start at the MIN and slowly increase the gain. Stop as soon as distortion is heard then lower the gain until the distortion disappear and only clear sound is produced.
- ③ **RCA INPUT:** Low level input of the **D1000.4** is **0.2V to 5V RMS** while the **D1500.2 & D3000.4** is **0.2V to 10V RMS**. Be sure to use a HIGH LOW LEVEL adaptor if the head unit has only speaker output.
- ④ **XOVER SWITCH & FREQUENCY ADJUST:** Used to adjust the boosted center frequency.
- ⑤ **BASS BOOST:** Available only on the **D1000.4**, used to add 0 - 12dB to the chosen center frequency.
- ⑥ **LINE LEVEL CONTROL:** Available only on the **D1500.2 & D3000.4** with a range of **0.2V to 10V RMS**.
- ⑦ **SUBSONIC FILTER:** Available only on the **D1500.2 & D3000.4**, used to protect the speakers from harmful low frequencies and DC Voltage. Note that the subsonic filter only takes effect when the amplifier is in full range mode.
- ⑧ **SIGNAL SENSING SWITCH:** Available only on the **D1500.2 & D3000.4**. Please refer to page 6-7 for the explanation of this feature.
- ⑨ **RCA OUTPUT:** Available only on the **D1500.2**.

Mini D Stereo Amps FUNCTIONS AND FEATURES



- ⑩ **SPEAKER CONNECTION:** Each amplifier has bridgeable speaker outputs. Note that the minimum impedance in bridged mode is **4-Ohm**.
- ⑪ **GROUND TERMINAL:** Connect to vehicle's chassis/ground using a short 4 gauge cable (2 feet maximum in length).
- ⑫ **REMOTE TERMINAL:** Connect remote cable to the head unit's remote terminal. If multiple amplifiers are installed in the same system, additional relays may be necessary.
- ⑬ **+12V BATTERY TERMINAL:** Connect to battery positive (+) using a 4 gauge cable.
- ⑭ **FUSES:** Used as an added protection from damaging excessive current. Be sure to use the proper fuse rating in your installation (see page 12).
- ⑮ **PROTECTION LED:** Available only on the **D1500.2 & D3000.4**. When lit up upon powering on, the amplifier may be in self-test mode. If this LED stays on, shut down the amplifier and locate what may have triggered the amplifier to protection mode. If problem persists, call or e-mail our technical support team for further assistance.

NOTE: Be sure to follow the wiring preparations/guidelines as listed on the next page to ensure proper installation.

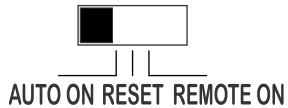
SIGNAL SENSING FEATURE - AUTO ON/REMOTE ON

The **Mini D1500.2** & **Mini D3000.4** amplifier features a special **AUTO SIGNAL SENSING Feature** which allows installers to turn on the amplifier without using the remote wire.

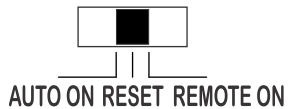
By simply connecting the RCA or Speaker level inputs to the amplifier, it will turn on automatically when it senses an audio signal. This feature makes upgrading the sound system in many of the latest model vehicles easier for installers as it eliminates the need to connect a remote turn on wire to the amplifier.

Before you proceed, please note the following:

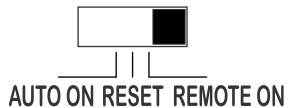
- This feature may not be compatible with all latest model vehicles.
- If your vehicle is going to be parked for over 4 weeks, then you should disconnect the main fuse of the amplifier.
- Be sure to follow the connection instructions and illustrations shown.



When the switch is on **AUTO ON**, the amplifier will automatically detect an incoming signal when the stereo is turned on. If the amplifier does not detect any signal after 20 minutes, the amplifier will automatically turn off.

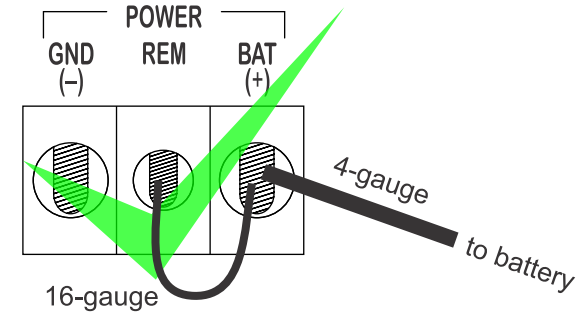


In case the system goes into protection, simply turn off the audio source and slide the switch to **RESET** then back to **AUTO ON** position.

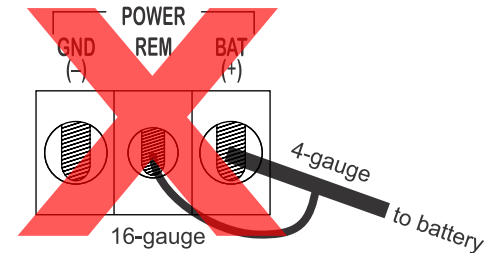


When the switch is on **REMOTE ON**, the amplifier relies on the remote wire to detect the signal and turn the amplifier on or off.

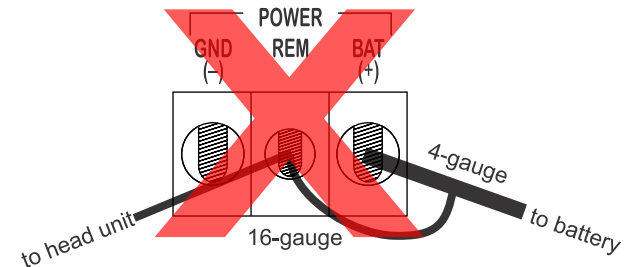
The proper power and remote wire connection when using the Auto Signal Sensing is illustrated below.



(!) DO NOT connect the remote wire to the battery wire as this will make the amplifier's auto sensing feature not work properly.



(!) DO NOT connect the remote wire to the head unit as this will damage your sound system.



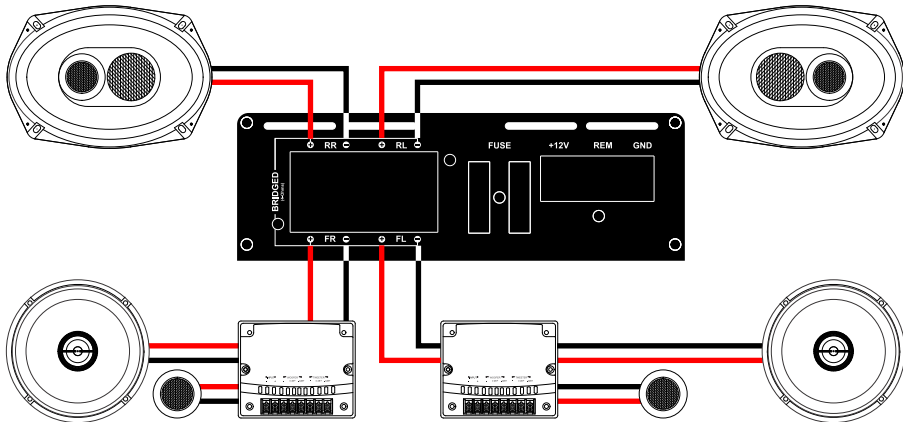
NOTE: RCA outputs must be inserted in CH1/2 for the amplifier to detect any incoming signal.

Mini D Stereo Amps WIRING PREPARATIONS

- ☑ Test the alternator output. Factory alternators will produce 60 - 80 amperes at best. Wear and heat will reduce the output by 40%.
- ☑ Alternator ground (-) must be reinforced. Use a 4-gauge cable instead of the factory 8-gauge.
- ☑ Alternator positive (+) to battery (+) must be reinforced. Use 4-gauge cables.
- ☑ Check your battery condition as batteries degrades after a while.
- ☑ Battery (+) to amplifier (+) must be connected using a 4-gauge cable.
- ☑ Ground amplifier to vehicle's chassis (bare metal) using 4-gauge cable, keep the cable short (2 feet max).
- ☑ Use 1 Farad capacitor to compensate for surges in demand.
- ☑ We recommend the use of one (1) auxiliary battery.

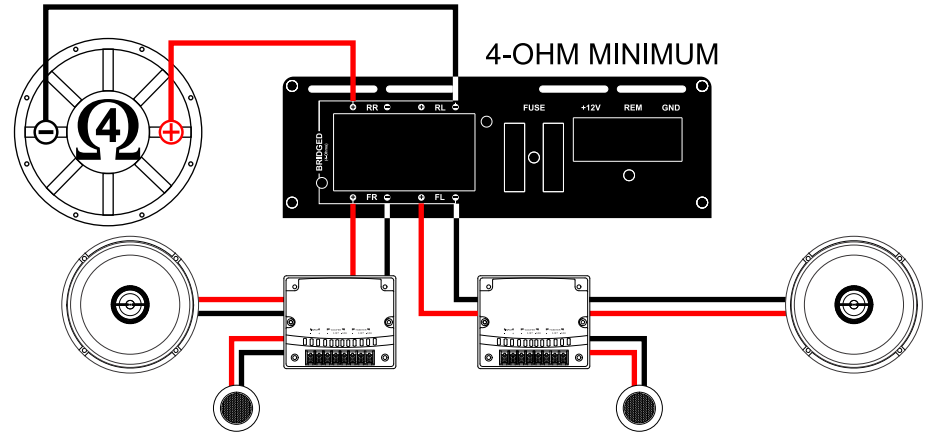
Mini D Stereo Amps WIRING CONFIGURATIONS

FRONT STEREO & REAR FILL WITH THE D1000.4

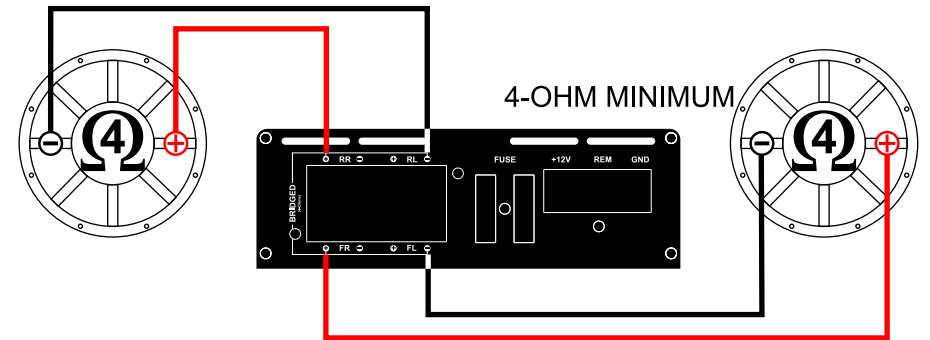


Mini D Stereo Amps WIRING CONFIGURATIONS

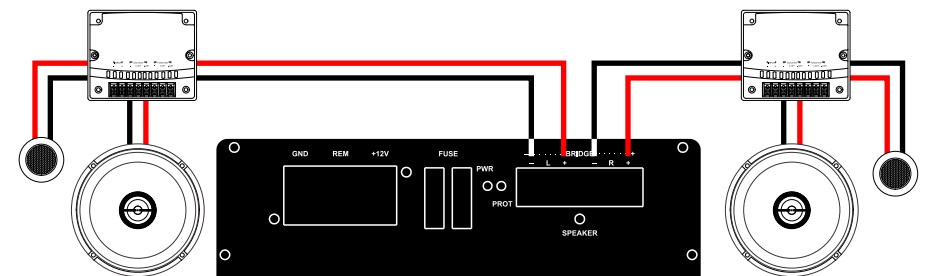
FRONT STEREO & BASS APPLICATION WITH THE D1000.4



BASS APPLICATION (BRIDGED) WITH THE D1000.4

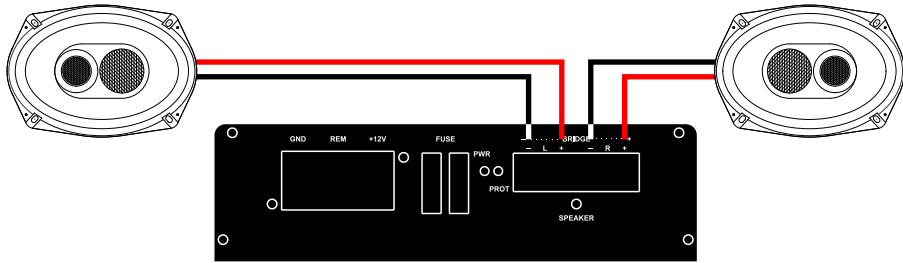


FRONT STEREO WITH THE D1500.2

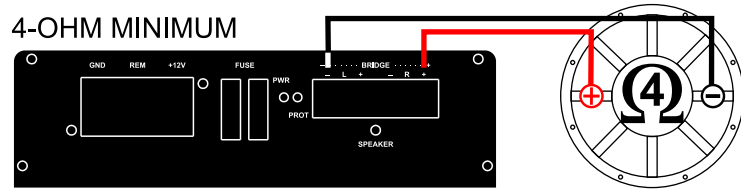


Mini D Stereo Amps WIRING CONFIGURATIONS

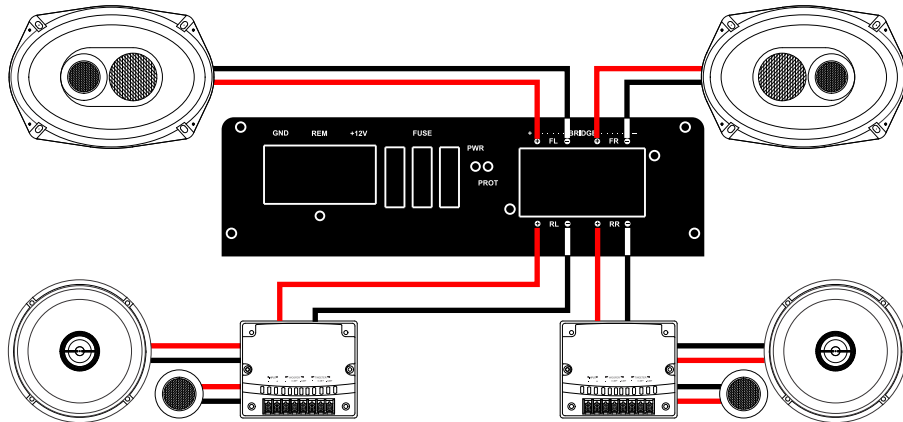
REAR FILL WITH THE D1500.2



BASS APPLICATION (BRIDGED) WITH THE D1500.2

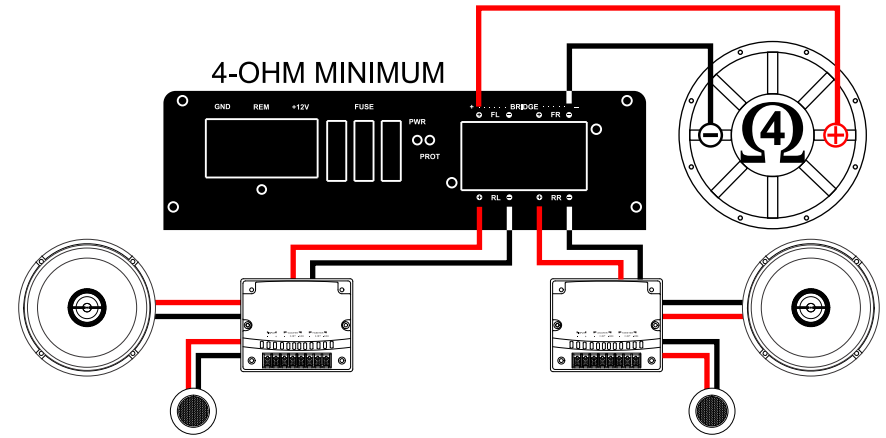


FRONT STEREO & REAR FILL WITH THE D3000.4

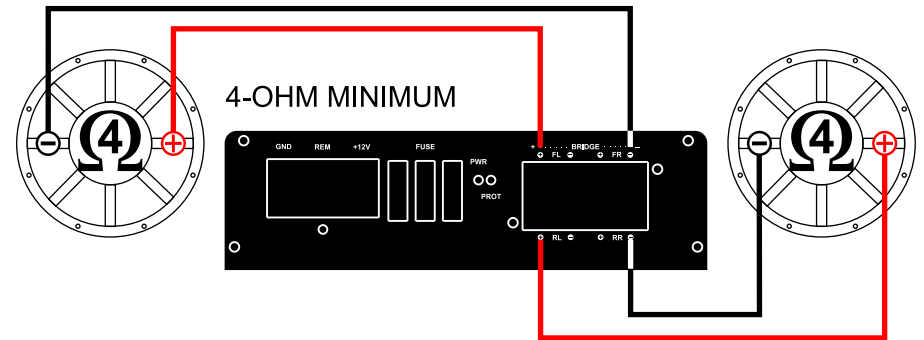


Mini D Stereo Amps WIRING CONFIGURATIONS

BASS APPLICATION (BRIDGED) WITH THE D3000.4



BASS APPLICATION (BRIDGED) WITH THE D3000.4



For more technical support, please contact:

E-mail: tech@earthquakesound.com
 US Toll Free: 1-800-576-7944
 Tel: 510-732-1000
 Fax: 510-732-1095

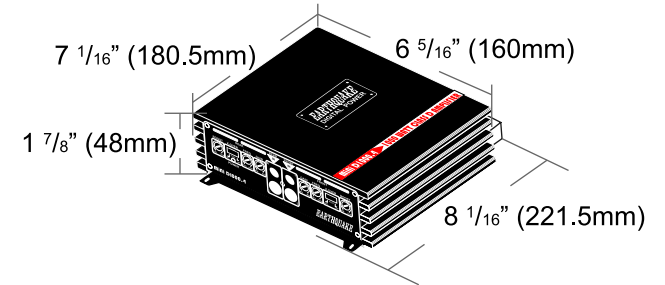
© Earthquake Sound Corporation. All rights reserved.
 This document should not be construed as a commitment on the part of Earthquake Sound Corporation.
 The information is subject to change without notice.
 Earthquake Sound Corporation assumes no responsibility for errors that may appear within this document.

Mini D Stereo Amps SPECIFICATIONS

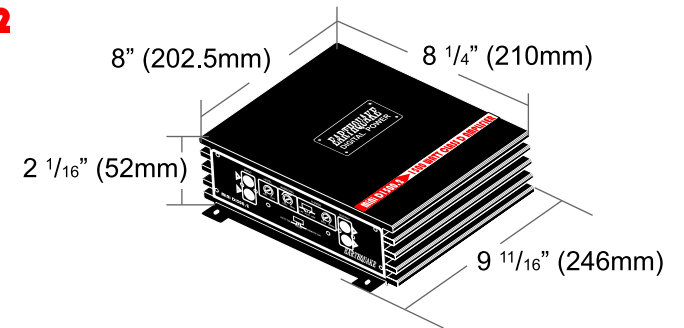
	Mini DI000.4	Mini DI500.2	Mini DI3000.4
Amplifier Class	D	D	D
Number of Channels	4	2	4
Max Power Output	1000 Watts	1500 Watts	3000 Watts
Power Handling @ 4-Ohm	4 x 65 WRMS	2 x 130 WRMS	4 x 130 WRMS
Power Handling @ 2-Ohm	4 x 90 WRMS	2 x 180 WRMS	4 x 180 WRMS
Power Handling - Bridged	2 x 190 WRMS @ 4-Ohm	1 x 360 WRMS @ 4-Ohm	2 x 360 WRMS @ 4-Ohm
THD+N	.01 %		
Channel Separation	80 dB	80 dB	90 dB
Crossover Frequencies	40 - 400 Hz	20 - 500 Hz	20 - 500 Hz
Bass Boost Gain Level	0 - 12dB	N/A	N/A
Subsonic Filter	N/A	15 - 30 Hz	15 - 30 Hz
Signal-to-Noise Ratio	> 110 dB		
Fuse Rating	2 x 20A (included)	2 x 30A (included)	3 x 35A (included)
ALL OUTPUT POWER MEASUREMENTS ARE MADE WITH DUMMY LOAD FOR THE RMS MEASUREMENTS. DUMMY LOADS ARE HARDER TO DRIVE THAN SPEAKERS AND DEMAND MORE POWER SUPPLY CURRENT.			

Mini D Stereo Amps SPECIFICATIONS

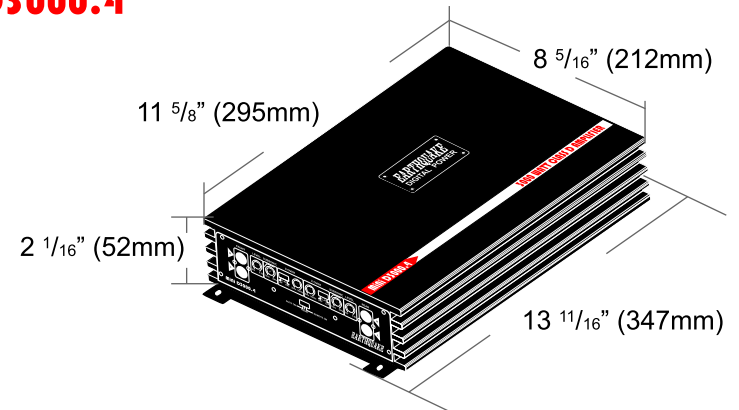
Mini DI000.4



Mini DI500.2



Mini DI3000.4



Mini D Amplifiers

One (1) Year Limited Warranty Guidelines (Valid in US Mainland Only)

Earthquake warrants the original purchaser that all Factory Sealed New Audio Products be free from defects in material and workmanship, under normal and proper use, for a period of **one (1) year from the date of purchase** (as shown on the original sales receipt with serial number affixed/written on it).

The one (1) year warranty period is valid **only if the product is properly installed by an Earthquake authorized party**, and the warranty registration card is properly filled out and sent to Earthquake Sound Corporation.

If the product is installed by a non-authorized party, a thirty (30) day limited warranty period applies.

(A) One (1) year limited warranty plan coverage guidelines:

Earthquake pays for labor, parts, and ground freight (only in US mainland, not including Alaska and Hawaii) back to customer.

(B) Warning:

- Products (sent for repair) that are tested by Earthquake technicians and deemed to have no problem, will not be covered by the limited warranty. Customer will be charged a minimum of one (1) hour of labor (ongoing rates) plus shipping charges back to customer.
- If products were received with improper protective packaging, customer will be charged product repackaging in addition to labor, parts and shipping charges.

(C) Earthquake agrees to repair or replace - at our option - all such defective products/parts subject to the following provisions:

- Defective products/parts have not been altered or repaired by other than an Earthquake factory approved technician.
- Products/parts are not subjected to negligence, misuse, improper use, or accident, damaged by improper line voltage, used with incompatible products, or have its serial number or any part of it altered, defaced, removed, or have been used in any way that is contrary to Earthquake's written instructions.

(D) Warranty Limitations:

Earthquake warranty does not cover products that have been modified and/or abused, including but not limited to the following:

- Fading, deterioration of speaker components & finish due to improper exposure to elements.
- Bent amplifier casing, damaged finish on the casing due to abuse, misuse, or improper use of cleaning material.
- Burnt tracers on PCB.
- Product/part damaged due to poor packaging or abusive shipping conditions.
- Subsequent damage to other products.

Mini D Amplifiers

One (1) Year Limited Warranty Guidelines (Valid in US Mainland Only)

A warranty claim will not be valid if the warranty registration card is not properly filled & returned to Earthquake with a copy of the sales receipt.

(E) Service Request:

To receive product(s) service, contact Earthquake Sound's service department at (510) 732-1000 and request an RMA number (Return Material Authorization), item(s) shipped without a valid RMA number will be refused. Make sure you provide us with your complete and correct shipping address, a valid phone number, and a brief description of the problem you are experiencing with the product. In most cases, our technicians might be able to resolve the problem over the phone, thus eliminating the need to ship the product.

(F) Shipping Instructions:

Product(s) must be properly packaged to minimize transport damage and avoid repackaging charges. Shipper claims regarding item(s) damaged in transit must be presented to the carrier. Earthquake Sound Corporation reserves the right to refuse improperly packed product(s). A copy of original sales receipt must accompany product(s) returned for service. We encourage you to include a written description of the problem inside the package. Ship product to:

Earthquake Sound Corp.
2727 Mc Cone Avenue
Hayward, CA 94545
Tel: (510) 732-1000

You are responsible for the cost of shipping the product to Earthquake Sound Corporation.

(G) Disputes Resolution:

All disputes - between clients and Earthquake Sound Corporation - resulting from the one (1) year limited warranty policy must be resolved according to the laws & regulations of the county of Alameda, California.

We strongly suggest keeping a copy of your sales receipt and note the model and serial numbers of your amplifier here for future reference.

Model No.

mini D _ _ _ . _

Serial No.

SERIAL NUMBER
_ _ _ _ _

Date of Purchase.

M M / D D / Y Y Y Y